

Light efficiency:

102 Lumen/Watt

Light quality:

CRI: 92.8

Color temperature:

3042 K

Output: 2713 lm

Peak: 8804 cd

Power: 26.7 W

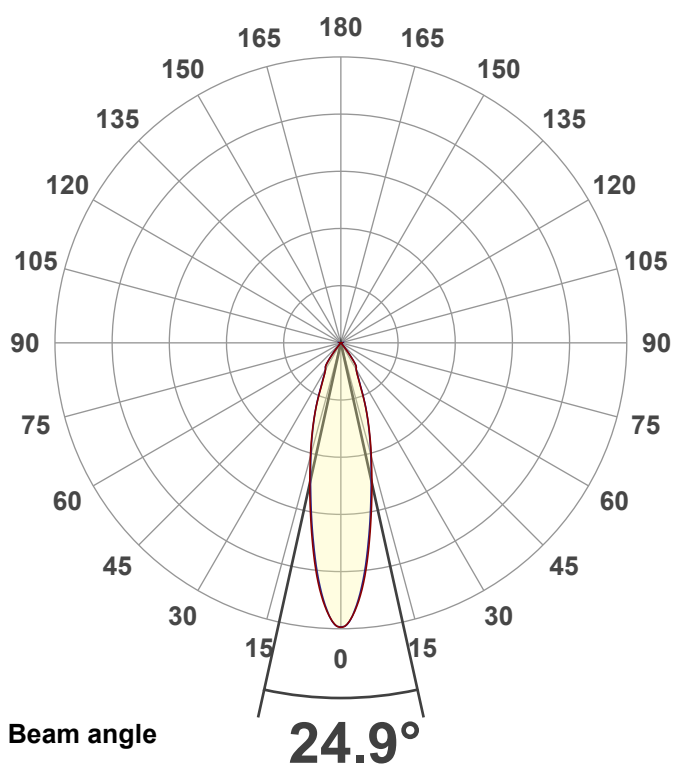
PF: 0.99



EXT-6D-SW-30LM-30K-90-25D

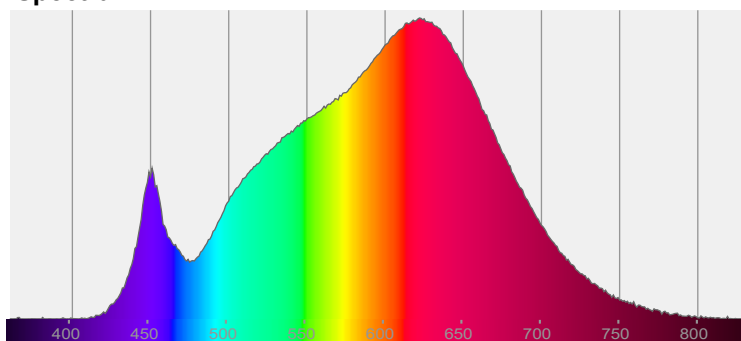
Date and time:

11/14/2023 11:26:44 AM

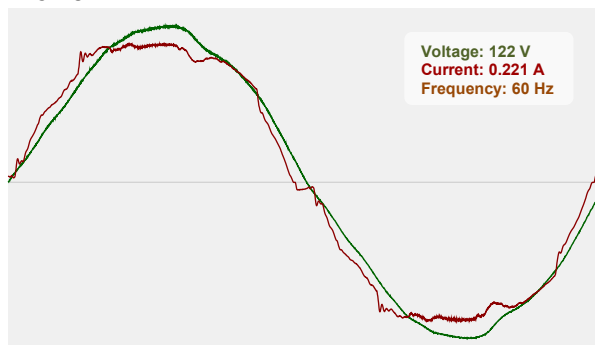


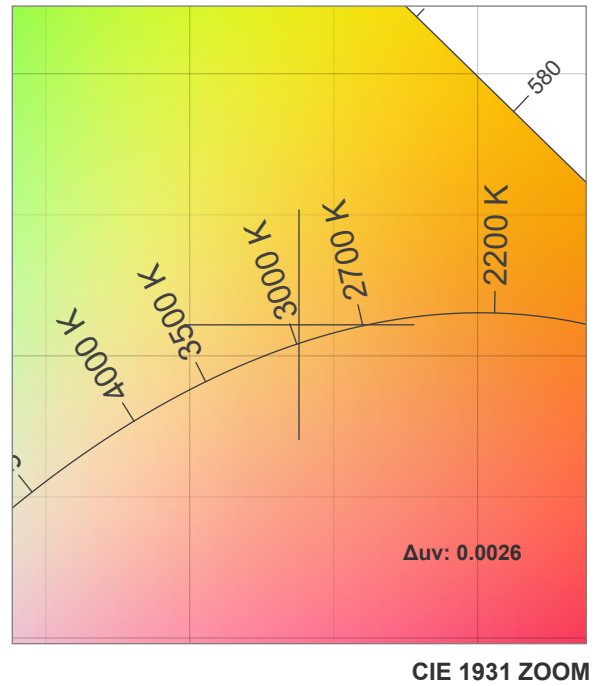
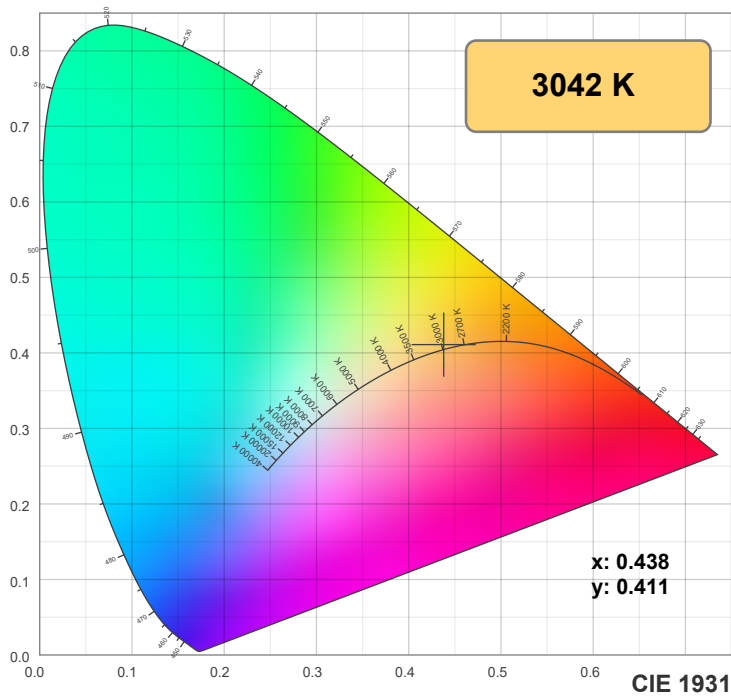
CIE 1931  
x: 0.438  
y: 0.411

Spectra

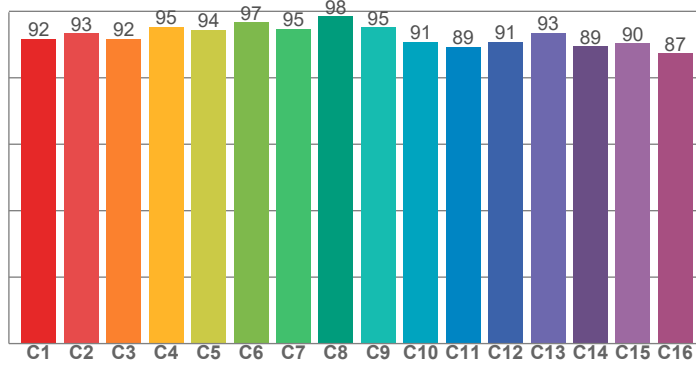


Power

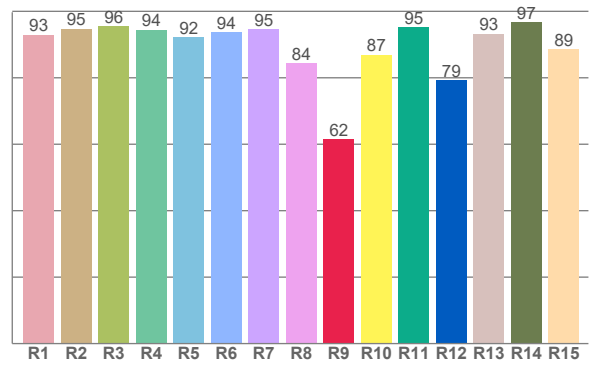




**TM30: 92.7**



**CRI: 92.8 (R1-R8)**



CRI R values, only R1-R8 are used to calculate final CRI value

R1	R2	R3	R4	R5	R6	R7	R8	R9	R10	R11	R12	R13	R14	R15
92.9	94.8	95.6	94.4	92.2	93.6	94.5	84.4	61.6	86.9	95.2	79.2	93.2	96.8	88.6

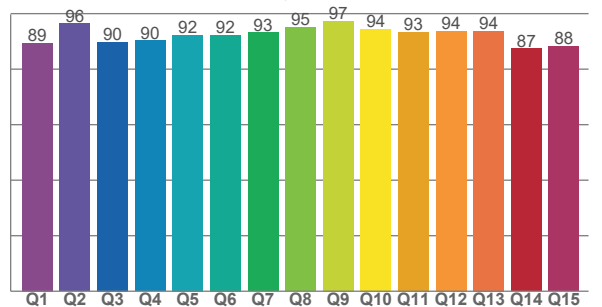
TM30 C values, 16 binned values out of total of 99 C values

C1	C2	C3	C4	C5	C6	C7	C8	C9	C10	C11	C12	C13	C14	C15	C16
91.7	93.4	91.7	95.3	94.5	96.6	94.8	98.4	95.1	90.7	89.3	90.8	93.5	89.5	90.4	87.4

CQS Q values

Q1	Q2	Q3	Q4	Q5	Q6	Q7	Q8	Q9	Q10	Q11	Q12	Q13	Q14	Q15
89.5	96.4	89.8	90.3	92.3	92.3	93.2	95.1	97.3	94.4	93.5	93.8	93.8	87.4	88.2

**CQS: 91.9**



## Color parameters

Color temperature	Color rendering index	Red component	Color fidelity	Color gamut	Color quality scale	Color coordinate cie 1931	Color coordinate cie 1931	Color coordinate	Color coordinate	Color deviation from black body
CCT	CRI	CRI R9	TM30 Rf	TM30 Rg	CQS	x	y	u	v	Δuv
3042 K	92.8	61.6	92.7	99.1	91.9	0.438	0.411	0.248	0.349	0.0026

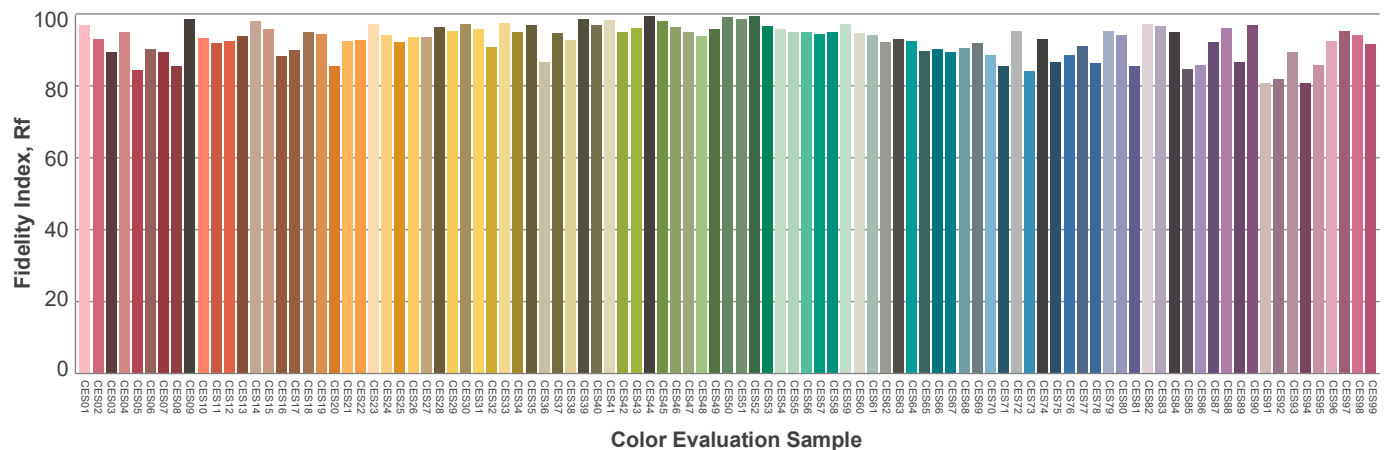
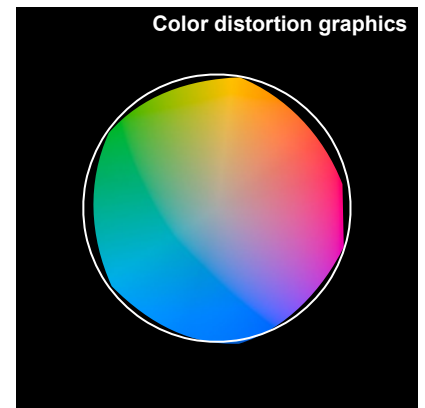
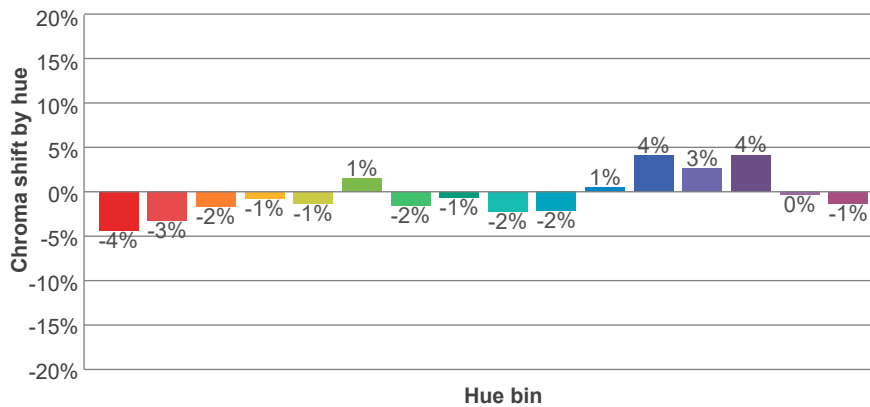
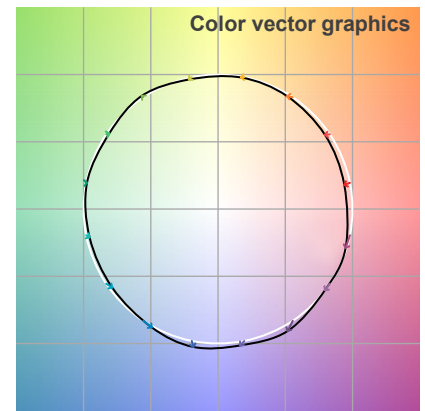
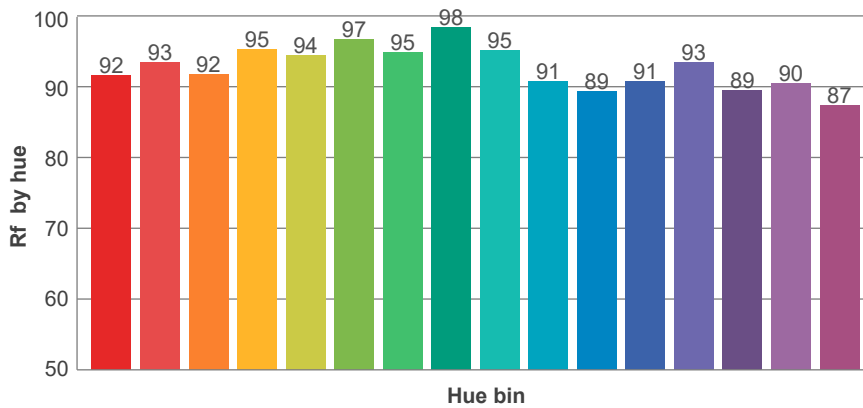
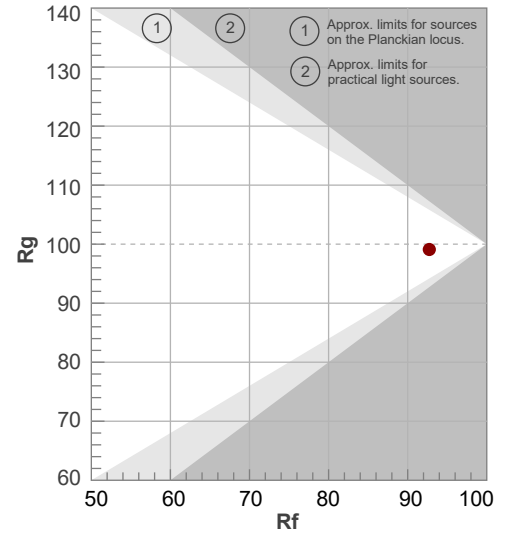
**Rf 92.7**

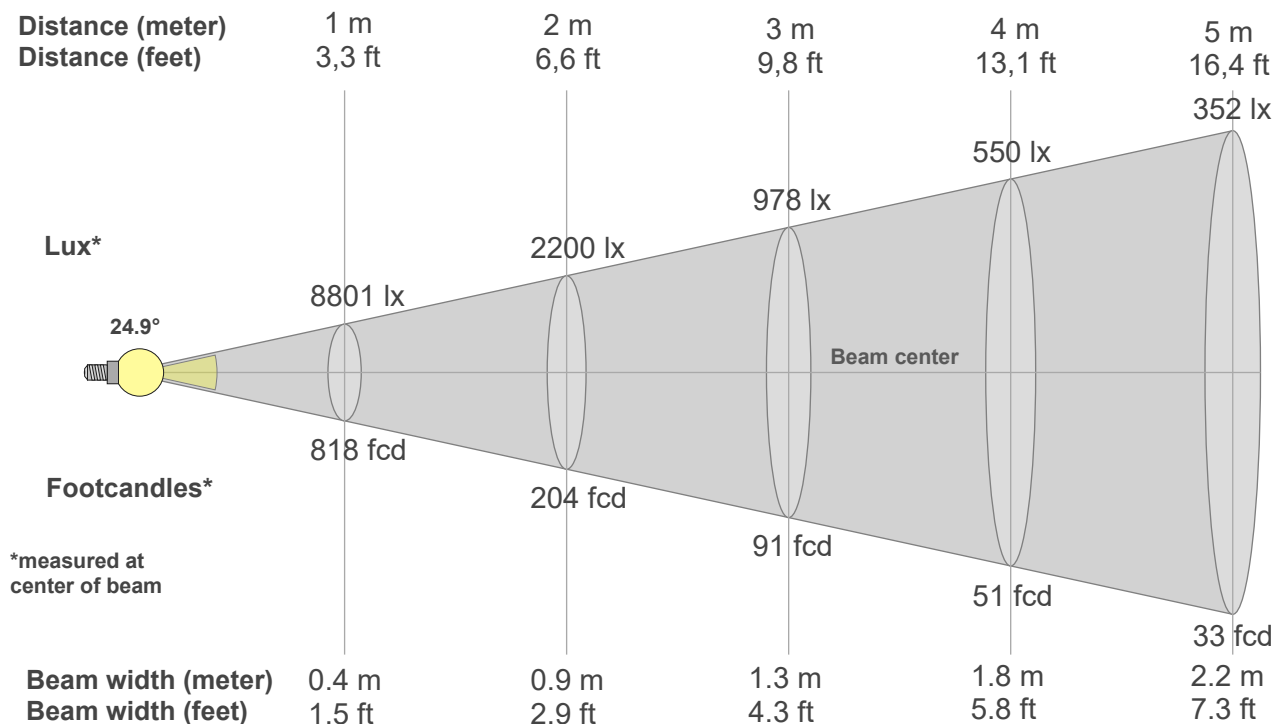
Fidelity index Rf

**Rg 99.1**

Gammut index Rg

Hue Bin	R <sub>f</sub>	Graphic shifts (%)	
		Chroma	Hue
1	92	-4%	-1%
2	93	-3%	2%
3	92	-2%	4%
4	95	-1%	2%
5	94	-1%	2%
6	97	1%	0%
7	95	-2%	-2%
8	98	-1%	0%
9	95	-2%	2%
10	91	-2%	5%
11	89	1%	8%
12	91	4%	2%
13	93	3%	-4%
14	89	4%	-7%
15	90	0%	-6%
16	87	-1%	-10%





#### Beam intensities from 1-20m

1m	2m	3m	4m	5m	6m	7m	8m	9m	10m	11m	12m	13m	14m	15m	16m	17m	18m	19m	20m
3.3ft	6.6ft	9.8ft	13.1ft	16.4ft	19.7ft	23ft	26.2ft	29.5ft	32.8ft	36.1ft	39.4ft	42.7ft	45.9ft	49.2ft	52.5ft	55.8ft	59.1ft	62.3ft	65.6ft
8801lx	2200lx	978lx	550lx	352lx	244lx	180lx	138lx	109lx	88lx	73lx	61lx	52lx	45lx	39lx	34lx	30lx	27lx	24lx	22lx
817.7fcd	204.4fcd	90.9fcd	51.1fcd	32.7fcd	22.7fcd	16.7fcd	12.8fcd	10.1fcd	8.2fcd	6.8fcd	5.7fcd	4.8fcd	4.2fcd	3.6fcd	3.2fcd	2.8fcd	2.5fcd	2.3fcd	2fcd

#### Intensities in 0° c-plane

0°	2°	4°	6°	8°	10°	12°	14°	16°	18°	20°	22°	24°	26°	28°	30°	32°	34°	36°	38°
8801	8562	7987	7202	6289	5406	4630	3942	3366	2847	2373	1925	1517	1243	1060	956	897	790	524	240
100%	97%	91%	82%	71%	61%	53%	45%	38%	32%	27%	22%	17%	14%	12%	11%	10%	9%	6%	3%

#### Intensities in 90° c-plane

0°	2°	4°	6°	8°	10°	12°	14°	16°	18°	20°	22°	24°	26°	28°	30°	32°	34°	36°	38°
8801	8574	7926	7086	6157	5286	4515	3863	3313	2808	2361	1943	1548	1272	1070	952	900	795	536	231
100%	97%	90%	81%	70%	60%	51%	44%	38%	32%	27%	22%	18%	14%	12%	11%	10%	9%	6%	3%

#### Intensities in 180° c-plane

0°	2°	4°	6°	8°	10°	12°	14°	16°	18°	20°	22°	24°	26°	28°	30°	32°	34°	36°	38°
8801	8562	7987	7202	6289	5406	4630	3942	3366	2847	2373	1925	1517	1243	1060	956	897	790	524	240
100%	97%	91%	82%	71%	61%	53%	45%	38%	32%	27%	22%	17%	14%	12%	11%	10%	9%	6%	3%

#### Intensities in 270° c-plane

0°	2°	4°	6°	8°	10°	12°	14°	16°	18°	20°	22°	24°	26°	28°	30°	32°	34°	36°	38°
8801	8574	7926	7086	6157	5286	4515	3863	3313	2808	2361	1943	1548	1272	1070	952	900	795	536	231
100%	97%	90%	81%	70%	60%	51%	44%	38%	32%	27%	22%	18%	14%	12%	11%	10%	9%	6%	3%

Beam angle 50%	Field angle 10%	Cutoff angle 2,5%	Intensity ratio in 120° cone	Intensity ratio in 90° cone
24.9°	65.3°	76.3°	99.7%	99.1%